



best of neocon gallery

design news

sponsored by

Save E-mail Print Most Popular RSS Reprints

Hickok Cole Architects Takes Lead on Square 54

March 2, 2010

-By Adam Figman



Washington, D.C.-based architecture firm Hickok Cole Architects has announced the "topping out" of Square 54, a mixed-use office, housing and retail project situated at 2200 Pennsylvania Avenue in our nation's capital. Stretched out over a 2.66-acre site, the potentially \$250 million facility is located across the street from George Washington University and is expected to be completed later this year.

Square 54 will contain 435,000 sq.-ft. of office space, 69,000 sq.-ft. of retail, a 38,000 sq.-ft. grocery store, 333 apartments and 1,026 parking spaces. It will occupy the space previously held by George Washington University Hospital.

The complex will consist of three buildings: Square 54 Residential I (160 ft. high, with 14 floors), Square 54 Residential II (140 ft., 12 floors), and Square 54 Office (150 ft., 11 floors).

The design architect is Pelli Clarke Pelli Architects, while Hickok Cole is listed as the architect of record.

BOOKMARK Save E-mail Print Most Popular RSS Reprints

Post a Comment

Asterisk (*) is a required field.

*Username:

*Rate This Article: (1=Bad, 5=Perfect)

*Comment:

submit reset

recent design news



Brehm Tower at U-M Health System Enhances Care Offerings

March 03, 2010 - Modern

KlingStubbins design includes expanded eye care, research, and education facility

Holocaust Memorial Design Competition Deadline Approaching

March 03, 2010 - International design competition will also seek public feedback on finalist's designs.

[more](#)

[more](#)

[Back to Design News Homepage](#)

industry news briefs

Brehm Tower at U-M Health System Enhances Care Offerings

Aloft Milwaukee Design Caters to Gen Y

Hickok Cole Architects Takes Lead on Square 54

HOK Lands \$130 Million Renovation Project

Janice Barnes Moves to Perkins+Will, New York

[more industry news](#)

newsletter sign up

advertisement

Kimball Office interstuhl
www.kimballoffice.com

More Quakes Shake Chile's Infrastructure

Walls: Movable: Raydoor

Chicago's Aqua Named 2009 Skyscraper of the Year

Obama Nominates Ayers to Architect of the Capitol

Benjamin Moore Honors Color Innovation in Architecture and Interior Design

advertisement

Enjoy the flexibility to choose your payment option each month.
Early Pay Discount
OR Defer Pay Option

Is the Plum Card right for you?
DECIDE FOR YOURSELF

plumforbusiness.com **OPEN**

For Immediate Release
Washington, DC (3/1/2010)

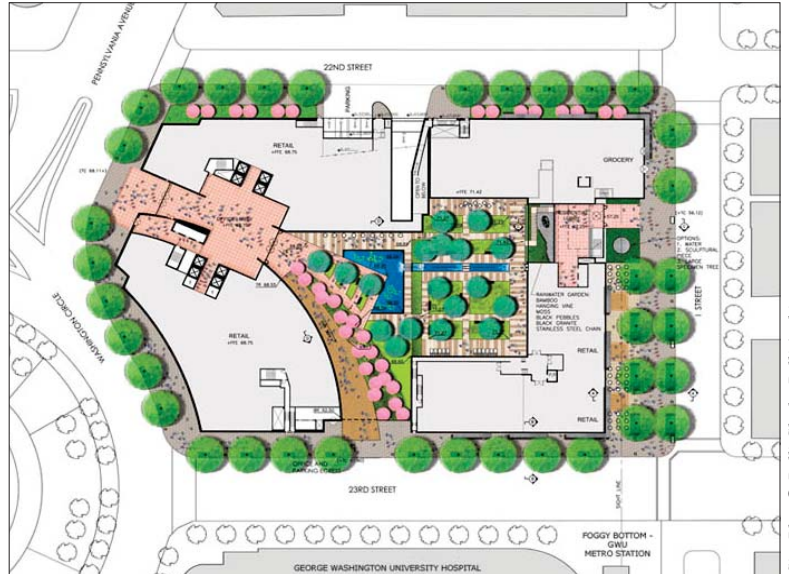
Contact: Marilyn Deane Mendell
mmendell@hickokcole.com
540-207-4045



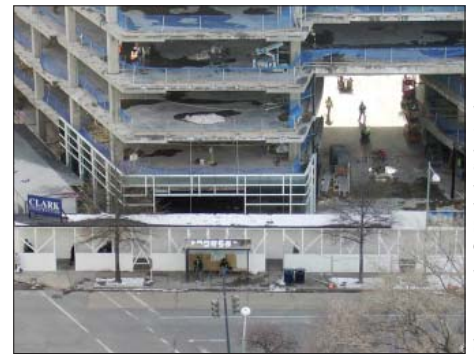
Square 54 Topped Out

Hickok Cole Architects — Architect of Record
Pelli Clarke Pelli Architects — Design Architect
Washington, DC

Hickok Cole Architects announces the “topping out” of Square 54, the **mixed-use office, housing and retail project** under construction across the street from George Washington University at 2200 Pennsylvania Avenue. Located on a 2.66 acre site, this project will include 435,000 sf of office, 69,000 sf of retail, over 1,026 parking spaces and 333 apartments. Plans also include a 38,000 sf grocery store.



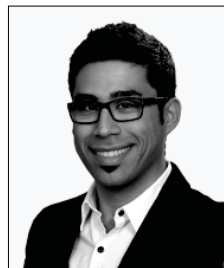
Site Plan © Pelli Clarke Pelli Architects



Photographs © Hickok Cole Architects

New Employees

Hickok Cole Architects welcomes new employees **Guilherme A.M. Almeida** and **Heather Trolan, LEED AP**.



Guilherme A.M. Almeida



Heather Trolan, LEED AP

© Hickok Cole Architects

Low-resolution files are attached. If you would like hi-resolution files for press purposes, please ask!

HICKOK COLE ARCHITECTS, INC is an award-winning Architecture, Housing, Interior Design and Master Planning firm in Washington, DC. It is also one of the most successful architectural firms in the region, experiencing steady growth over a period of twenty years. Led by Principals Michael E. Hickok, AIA and Yolanda Cole, AIA, LEED®AP, the sixty person firm specializes in commercial office buildings, multi-family housing and mixed-use projects as well as interior design for corporate, government, institutional, non-profit and law firm clients and has expertise in feasibility studies, land planning and facility planning.