

# 20/2008

VISION

Celebrating 20 dazzling years...  
...and anticipating 20 more.

Join Hickok Cole Architects' **VISION** for the New Year.

Reach for the <sup>local</sup> stars  
the sky's the limit!

# Hickok Cole Projects

Contact: Vanessa J. Bridges  
Director of Business Development  
Voice: 202.667.9776  
Email: vbridges@hickokcole.com

Hickok Cole Architects  
1023 31st Street, NW  
Washington, DC 20007  
www.hickokcole.com



## Architecture



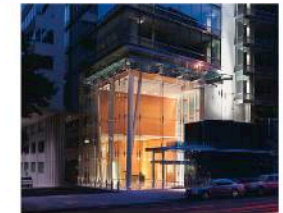
**POTOMAC CENTER**  
Location: 500-550 12th Street, SW  
Project Size: 960,000 sf  
Completion: Phase I 2003; Phase II 2005  
Developer: The JBG Companies

- Renovation of an existing 1960s office building into a Class A office complex.
- Three floors were added to the existing 8-story structure and the building's footprint was expanded by one structural bay.
- Tenants include US Department of Education and US Department of Housing and Urban Development (HUD).
- LEED® Silver Certified.



**250 M STREET, SE**  
Location: 250 M Street, SE  
Project Size: Retail 11,000 sf  
Office 190,000 sf  
Parking 105,000 sf  
Project Type: New mixed-use development  
Status: In Design  
Developer: William C. Smith & Company

- Offering excellent views of the Capitol, the new mixed-use development will be within walking distance of the new Washington Nationals Park and planned waterfront Canal Park development.
- Registered for LEED® Core and Shell and currently seeking LEED® Silver.



**COLUMBIA CENTER**  
Location: 1152 Fifteenth Street, NW  
Project Size: 415,000 sf  
Project Type: Class A Office with below grade parking and ground-floor retail  
Completion: 2007  
Developer: Monument Realty LLC

- Corner atrium "light box" lobby enclosed in glass is visible from McPherson Square two blocks away.
- Lobby features honey-toned anigre wood and dichroic glass "waterfall" panels that capture light and refract color.



**1050 K STREET**  
Location: 1050 K Street, NW  
Project Size: 140,000 sf  
Project Type: Class A Office with below-grade parking and ground-floor retail  
Completion: 2008  
Developers: The Lenkin Company and The Tower Companies

- K Street's first Gold Certified LEED® Building will be the new DC headquarters of Knoll Furniture.
- Chinese gardens will create a natural, inviting environment for employees.



**777 6TH STREET**  
Location: 777 6th Street, NW  
Project Size: 180,000 sf  
Project Type: Office with ground-floor retail and 4-level below-grade parking  
Completion: 2007  
Developer: Trammel Crow Company

- Located in DC's Chinatown.
- Asian details inspired by local temple's upcurved roof lines and traditional Chinese post-and-beam construction.
- Chinese symbols along frontage engage pedestrians and respond to local context.

## Housing



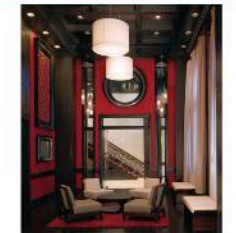
**ADAMS ROW**  
Location: 2301 Champlain Street, NW  
Project Size: 70,000 sf, 68 units  
Completion: 2005  
Developer: PN Hoffman and Adams Investment Group LLC

- High-end, loft style condominium building in trendy Adams Morgan neighborhood.
- Large volume spaces with ample daylighting.
- Recipient of 6 architectural design awards.
- 53% of the units were sold after the first public offering.



**DUMBARTON PLACE**  
Location: 1414 22nd Street, NW  
Project Size: 60,000 sf, 36 units  
Completion: 2005  
Developer: Monument Realty LLC

- Adaptive reuse of 1970s-era Congressional Quarterly office building into luxury condominiums.
- Freestanding structure is situated between Georgetown and Dupont Circle and overlooks Rock Creek Park to its west.



**KENYON SQUARE**  
Location: 14th and Kenyon Streets, NW  
Project Size: 4,000 sf  
Completion: 2007  
Developer: Donatelli Development, Inc.

- Common area design of 153 unit high-end residential condominium building.
- Located in the newly revitalized neighborhood of Columbia Heights, Washington, DC.
- Design concept creates a balance and tension between modern and traditional design elements.



**FENNESSY LOFTS**  
Location: 1209 13th Street, NW  
Project Size: 46,000 sf, 38 units  
Completion: 2008  
Developer: Ellis Denning Properties

- Adaptive reuse of historic Proctor Livery Stable with a modern addition.
- Distinct in its narrow shape and massing, the structure will present an elegant contemporary façade through the use of recycled light gauge bearing metal.
- A sustainable, "green" roof will process all of the building's storm water.



**RIGGS ROW & RIGGS PLACE**  
Location: South Dakota Ave & Riggs Road, NE  
Project Size: 256,013 sf, 464 units  
Completion: 2010  
Developer: Lowe Enterprises, Ellis Denning Properties, and Dakota Square LLC

- One phase of the 900,000 sf, 10 acre Fort Totten Square development of nearly 900 residential units and 75,000 sf of retail.
- Significant interior courtyards will be accessible by all residents.
- The project is steps away from the Fort Totten Metro station.

## Interiors



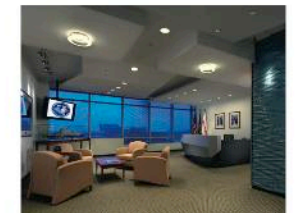
**CHILD WELFARE LEAGUE OF AMERICA**  
Location: 2345 Crystal Drive, Arlington, VA  
Project Size: 15,000 sf  
Completion: 2007

- Full-scale redesign of relocated headquarters of national non-profit organization.
- Uplifting design concept contrasts with the organization's weighty mission of assisting abused and neglected children and their families.



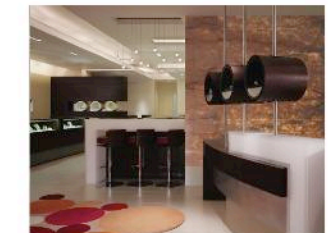
**WILLIAM C. SMITH & CO.**  
Location: 1000 New Jersey Ave, SE  
Project Size: 20,000 sf  
Completion: 2004

- Two contrasting wings of office space designed as a city grid and urban park.
- Designers managed cultural shift from a closed office environment to an open, shared office environment that creates a sense of community.
- A central reception area was created to serve as the "Town Square".



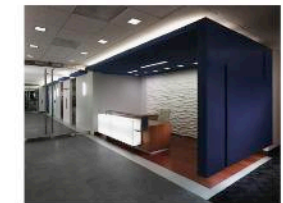
**RAYTHEON**  
Location: 1100 New Jersey Ave, SE  
Project Size: 32,000 sf  
Completion: 2006

- Full floor interiors tenant build-out at award winning Federal Gateway, also designed by Hickok Cole Architects.
- Space incorporates and exemplifies the facilities mission to design the new DDX battleship.



**I. GORMAN JEWELERS**  
Location: 1133 20th Street, NW  
Project Size: 3,500 sf  
Completion: 2007

- High-end jewelry store located in the heart of Washington DC's business district.
- Modern, edgy design reflects this upscale retailer, its products and clients.



**NORTHROP GRUMMAN INFORMATION TECHNOLOGY CSL GROUP**  
Location: 15010 Conference Center Drive  
Chantilly, VA  
Project Size: 145,000 sf  
Completion: 2007

- New headquarters facility on four floors.
- Main reception area features illuminated anigre desk, white tiger wood flooring, and Northrop Grumman-blue "floating wall" suspended from the slab above by structural steel.

# National Harbor, MD

Metropolitan Washington's Newest Zip Code: 20745



## Architecture



## Interiors



## Interesting Facts

- New \$2 billion, 300-acre mixed-use entertainment destination located in Prince George's County, Maryland.
- Over 11 years of planning and design went into the creation of the largest economic development project in the County.
- The cornerstone of project is the Gaylord National Resort and Convention Center - the largest non-gaming hotel and convention center on the Eastern Seaboard.
- 12 buildings on 4 million square feet constitute the first phase of National Harbor.
- Hickok Cole Architects' contribution consists of over 1.2 million square feet of construction in two buildings: Building J at 174 Waterfront Street and Building M at 120 Waterfront Street.
- 75% of the buildings sit on concrete pile foundations.
- Approximately 500 90"x14"x14" concrete piles were driven for each of Hickok Cole's buildings during construction.
- A private concrete plant was constructed on-site to accommodate project needs.
- The Peterson Companies purchased the outdoor sculpture "The Awakening" and lifted it from its 27 year old home on Hains Point, Washington, DC, then barged and trucked it to a new sandy beach on the site of National Harbor.
- New highway exits from Maryland, Virginia, and Washington, DC were created to accommodate travelers to National Harbor.
- View a webcam of the site at <http://petersoncos.oxblue.com/nationalharbor/>

## Image Key

- A: Aerial view of National Harbor, Maryland
- B: Building J at 174 Waterfront Street
- C: Building M at 120 Waterfront Street
- D: Scaled model of completed National Harbor site at Design & Construction office
- E: Conference room interiors at Design & Construction office

## Hickok Cole Architects' Role in National Harbor

### Building J: 174 Waterfront Street

- 7 floors of parking, 4 floors of office, and ground retail.
- Traditional design includes rounded arches and intricate brick detailing.
- Retail on both Waterfront and Fleet Street.
- Corner offices feature commanding views of the Potomac River.
- Dedicated elevator tower to serve adjacent Residence Inn.

### Building M: 120 Waterfront Street

- 7 floors of parking, 4 floors of office, and ground retail.
- Modern design influence.
- Glass architectural light tower complements corner of the structure.
- Corner offices feature views of the newly constructed Wilson Bridge along the Potomac River.

### Common Design Elements

- Partial green roof with landscape plantings and trees at parking garage.
- Lobby materials will include natural stone floors, bubinga wood and fabric wall panels, architectural lighting, raised dome, and cove ceilings.
- Elevator lobby towers will feature glass curtain walls.

### Hickok Cole Architects at a Glance

- Hickok Cole Architects is an award-winning Architecture, Housing, Interior Design and Master Planning firm located in Washington, DC. It is also one of the most successful architectural firms in the region, experiencing steady growth over a period of twenty years. Led by Principals Michael E. Hickok, AIA and Yolanda Cole, AIA, LEED®AP, the ninety-person firm specializes in commercial office buildings, multi-family housing and mixed-use projects as well as interior design for corporate, government, institutional, non-profit and law firm clients.

